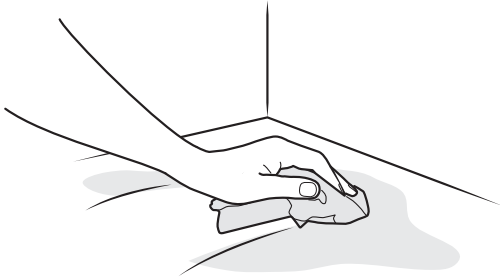




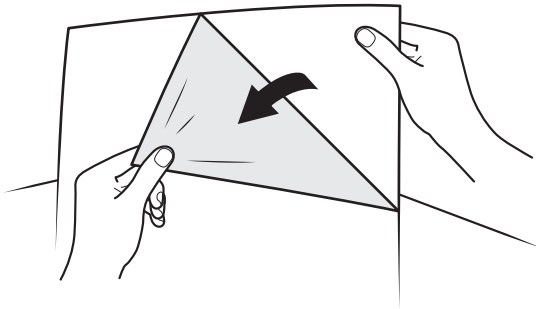
Instructions of use

Sticky mats

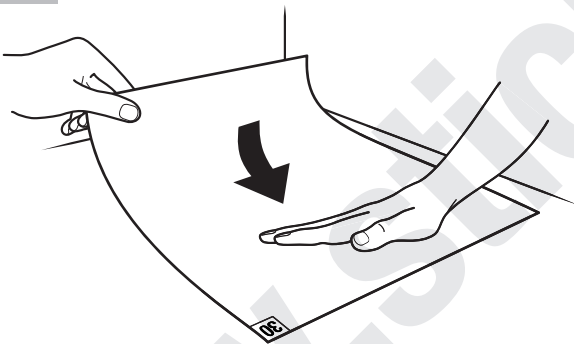
- 1** Clean the floor surface where you want to attach the mat (degrease and drain)



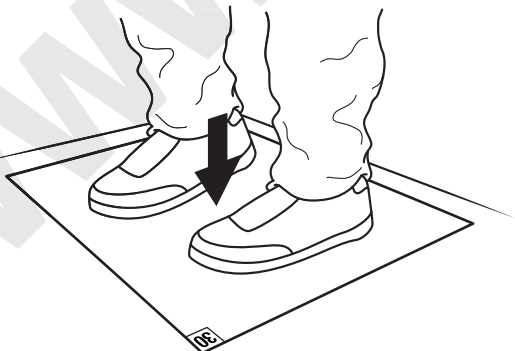
- 2** Remove bottom protection film



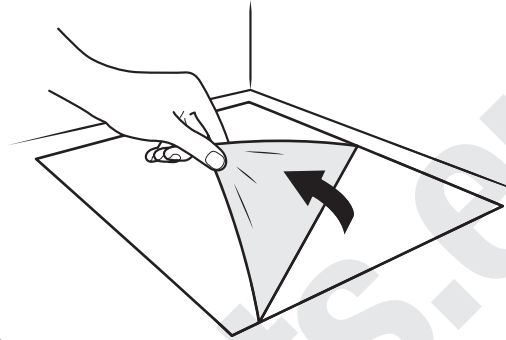
- 3** Holding the other end of mat with one hand and attaching the mat gradually with other hand



- 4** Stepping on the mat several times

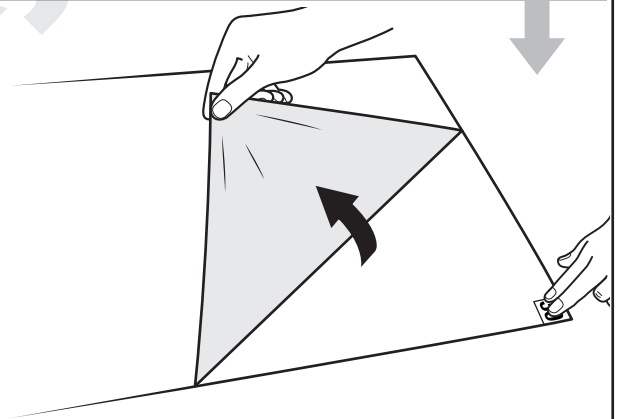
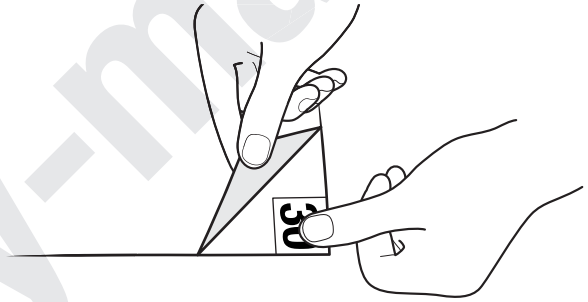


- 5** Removing top protection film

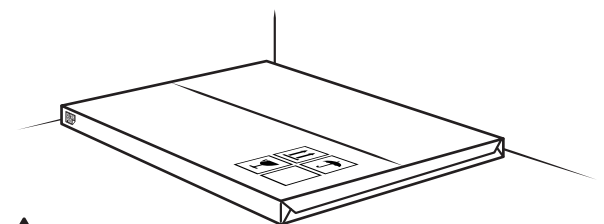


- i** Once the mat is no longer sticky, peel off another layer

Peeling off instructions



Recommended storage



Store mats horizontally as shown on the picture